

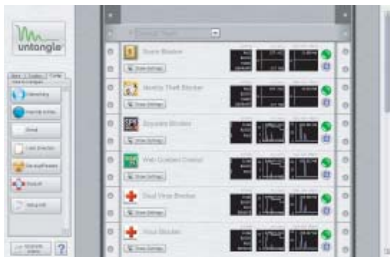


CD Install Guide

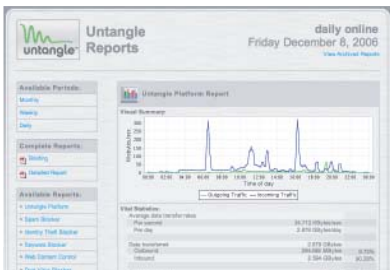
Congratulations!

You are on your way to a simpler, easier way to manage your network. This guide shows you how to convert an ordinary PC into an Untangle Server using an Untangle Install CD.

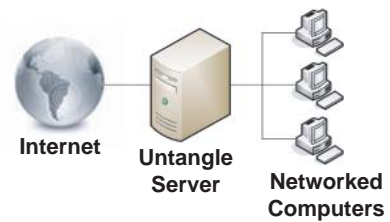
What does the Untangle Server do?



The Untangle Server gives you a simple way to protect, control, and monitor your computer network. It delivers the technology you need to protect from threats such as viruses, spyware, and attacks. It protects productivity by controlling illegitimate web surfing, and gives an in depth view of network activity. All this in a single usable interface.



Untangle Reports provides clear, concise reports about network traffic and policy violations. With this information you can spot problems related to viruses or spyware and also monitor illegitimate user behavior, such as web surfing or instant messaging.





The Untangle Server runs on a PC located between your Internet connection (cable/dsl modem, etc.) and your computer network switch. It can either replace or compliment an existing Router or Firewall.

Hardware Requirements



Resource	Minimum	Recommended
CPU:	1.0 Ghz 2	.0+ Ghz
Memory:	512 MB 1	-2 GB
Hard Drive:	20 GB	40+ GB
Network Cards: 2		3+ (for DMZ)

Note: You must have a bootable CD/DVD drive installed in order to start the installation process.

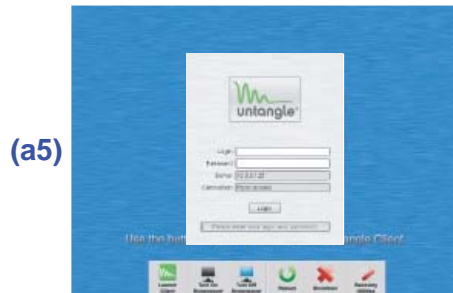
Step 1. The CD Installation Wizard

- (a1) 
- (a2) 
- WARNING: This install erases all the data on the hard disk that you choose.**
- 1) Start your computer with the Untangle Install CD inserted.
 - 2) A blue screen (a1) should appear, telling you to wait. If you do not see this screen, you may need to instruct your computer to boot from the CD drive.
 - 3) After a brief period, the “Install Wizard” (a2) will appear. Follow the steps in this wizard.
 - 4) Your computer will then shutdown.
 - 5) Turn your computer on, and **quickly eject the CD before your computer boots from it again.**
 - 6) Wait for the Untangle Server to boot.

Step 2. The Server Setup Wizard

- (a3) 
- (a4) 
- 1) When the Untangle Server is done booting you will see the desktop (a3).
 - 2) Click the “Launch Client” button, and wait for the Setup Wizard to appear.
 - 3) Follow the steps in the “Setup Wizard” (a4). During the “Interface Test” step of the “Setup Wizard”, you should connect your external network interface to your internet connection and connect your internal network interface to your network. The “Interface Test” step will help you determine which network card is internal and which one is external.
 - 4) When the “Setup Wizard” is done, a login window will appear.

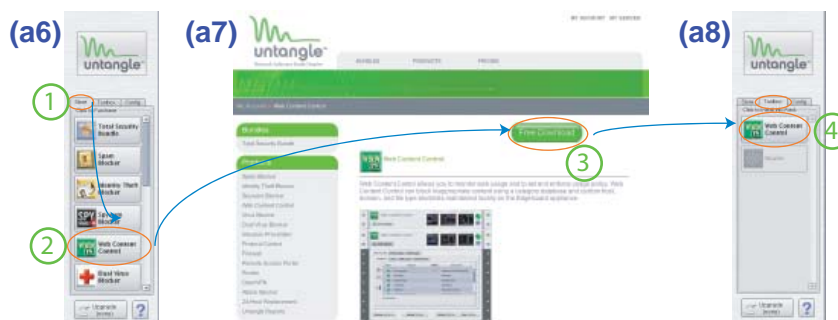
Step 3. Logging In



- 1) After the “Setup Wizard”, the “Login Window” (a5) will appear. In the future, you can create a new “Login Window” by clicking the “Launch Client” button in the button bar.
- 2) Enter your login and password, which you chose during the “Setup Wizard”. (Note: your first login is always “admin”)
- 3) Click the “Login” button. If you entered a valid login and password, the rack user interface will appear.

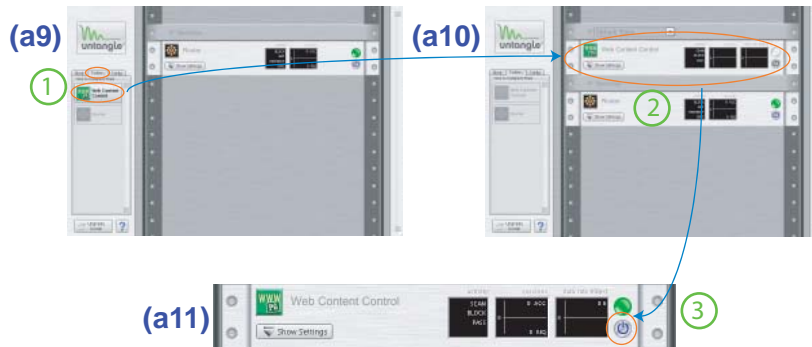
Note: You can also login from a separate computer by using a web browser and navigating to the address of your Untangle Server on your network.

Step 4. Subscribing to Software Products



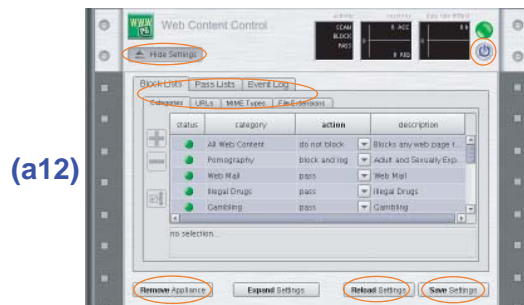
- 1) Select the “Store” tab. Scroll down to and click on the Software Product you would like to subscribe to or the free trial which you would like to try or buy. (a6)
- 2) The Untangle Online Store will appear in a browser. The first time you enter the store you will be asked some initial questions. After answering these questions you will see a webpage showing more information and options about your selected Software Product. (a7)
- 3) Click “Free Download” or “Free Trial” or “Purchase”, depending on what you would like to do and what options are available.
- 4) Your chosen Software Product will appear in the “My Apps” Tab, ready to be deployed to your rack. (a8)

Step 5. Deploying Software Products



- 1) Select the “My Apps” tab. Scroll down to and click on the Software Product you would like to deploy to your rack. **(a9)**
- 2) The selected Software Product will then be deployed to your rack, with its power off. **(a10)**
- 3) To use default settings, simply click on the Software Product’s “Power” button. **(a11)** Otherwise, customize your settings and then turn it on. Read the next step to learn about customizing your settings.

Step 6. Customizing Software Products



Use the “Show/Hide” Settings button to expose and hide customizable settings. **(a12)** After making changes, click the “Save Settings” button to accept your changes. (Notice, you must turn the Software Product “on” for your currently saved settings to take effect.) Click the “Reload Settings” button if you don’t want to accept your changes. Use the “Power” button to activate/deactivate your currently saved settings. Use the “Remove” button to remove a software product from your rack if you no longer need it.

Step 7. Viewing Reports



(a13)



(a14)



(a15)

- 1) Make sure you have Untangle Reports in your rack and that it is turned on. (a13)
- 2) Also, any product you want included in reporting must be in your rack and turned on.
- 3) When you would like to see a report, go to the login webpage of your Untangle Server. Click the “View Untangle Reports” link. (a14)
- 4) Enter your login and password when prompted. Then a webpage will appear showing you various available reports. (a15)

Note: Initially your Untangle Server will not have any reports available. You must wait at least 1 day before any reports will be available to view.

Technical Assistance

We would be happy to help! For technical assistance in installing, setting up, and operating your Untangle Server:

Online Support: <http://www.untangle.com/support>
Online User Manual: <http://www.untangle.com/docs>

Paid subscribers can receive live assistance. See our support website for more details.

How can I get an Untangle Install CD?

You can get a free Untangle Install CD in two different ways:

a) Online Download: Download a CD image (in ISO format) from Untangle at <http://www.untangle.com/download>, then burn your own CD using CD burning software (such as Nero.) Note: To burn an install CD from an ISO image, refer to your CD burning software documentation.

b) Mail: Request that Untangle mail you a free CD at:

<http://www.untangle.com/download>. If you received this Install Guide via mail, your Install CD is attached below.